



Halsey Taylor®

Satisfying Thirsts Since 1912

Introducing **14 Gauge Vandal-resistant** Water Coolers from Halsey Taylor®



- Heavy-duty 14 gauge stainless steel cabinet with integrated basin
- Vandal-resistant design, including the water conserving SmartFlow™ Bubbler
- U.L. Listed for indoor and outdoor service
- Can be installed to meet adult and child ADA
- Ideal for schools, correctional facilities and other rigorous, heavy-use applications





HVR8HD ADA



HVR8HD-BL ADA

HVRHD Series Heavy-duty Water Coolers

The new HVRHD series of 14 gauge vandal-resistant water coolers from Halsey Taylor is specifically designed for installations prone to vandalism. But just because these heavy-duty coolers are built to stand up to daily use, doesn't mean they shouldn't look good. The attractive contoured profile and integrated basin result in a sleek, modern look that blends beautifully in any setting.

Features

- **14 gauge, heavy-duty satin finish stainless steel** cabinet and **integrated basin** resists stains, corrosion and can support a vertical load up to 500 pounds
- **Vandal-resistant SmartFlow™ bubbler** reduces the flow of water by almost 40%[▲], while still providing a satisfying drink of water
- **No-lead design water system** is free of lead containing brass parts
- Can be installed to meet **adult and child ADA requirements**
- **Heavy-duty front access panel** with vandal-resistant fasteners
- **U.L. Listed** for both indoor and outdoor service for increased flexibility
- **Vandal-resistant, self-closing push button** does not require grasping or twisting
- **Screened vents** prevent objects from being inserted into the unit
- One-piece **vandal-resistant drain** helps prevent tampering
- **Attractive contoured basin provides** a safe, low profile design
- Stream height regulator is easily adjusted through the hole in the pushbutton
- Ideal for schools, correctional facilities, and other rigorous, heavy-use applications
- Available as a single (HVR8HD ADA) and bi-level (HVR8HD-BL ADA) unit



Optional water filter is available



SmartFlow™
Vandal-resistant
bubbler



Vandal-resistant
push button

▲ Over average market performance



© Halsey Taylor 2009 Printed in U.S.A. (4/09) HT-0002



Halsey Taylor®

2222 Camden Court
Oak Brook, Illinois 60523
630.574.3500
www.halseytaylor.com





Halsey Taylor®
Satisfying Thirsts Since 1912

MODEL: ☐ HVR8HD-BL ADA



This water cooler is certified to NSF/ANSI 61.

GENERAL

Self-contained, wall hung electric refrigerated water coolers with reliable vandal-resistant design. Constructed in 14 gauge heavy-duty stainless steel with a curved profile offering a safe and unobtrusive design. Ideal for applications prone to tampering, such as prisons and educational facilities. Includes the water-efficient, SmartFlow™ Bubbler.

When properly installed, unit meets state and federal requirements as defined by the Americans with Disabilities Act for both children or adults. Unit is certified to NSF/ANSI 61 and meets requirements of the Safe Drinking Water Act. Unit is UL Listed and provides 50°F water at 80°F inlet water and 90°F ambient.

COOLER CABINET / BASIN

Heavy-duty 14 gauge stainless steel cabinet with front access panel and integral basin. Durable satin finish resists stains and corrosion and is easy to maintain. Perforated venting with screens to prevent objects from being inserted into cooler.

COOLER TOP

Basin has embossed bubbler pad. Anti-splash ridge reduces splatter and contoured to insure proper drainage. Features heavy-duty, vandal-resistant drain.

VANDAL RESISTANT SMARTFLOW™ BUBBLER

Vandal-resistant, water-efficient bubbler is one-piece, chrome-plated. Unit has integral hood guard design to prevent contamination from other users, airborne deposits and tampering. Reduces the flow of water by nearly 40% ▲ but maintains a steady, satisfying water stream. Keyed into position to prevent rotation.

PUSHBUTTON ACTUATION MECHANISM

Self-closing, vandal-resistant pushbutton does not require grasping or twisting. Allows front access stream height adjustment.

AUTOMATIC STREAM HEIGHT REGULATOR

Self-closing assembly is located inside unit to prevent tampering. Unit resists corrosion and liming. A constant stream height is automatically maintained under line pressures that vary from 20 to 105 psi.

▲ over average market performance

INLET STRAINER

Easily cleaned in-line strainer screen traps articles of 140 microns or larger before entering the waterway.

TEMPERATURE CONTROL

Positive sensing thermostat for controlling temperature of storage tank water. Factory set at 50°F. Adjustable +/- 5°F.

STORAGE TANK

Stainless steel evaporator/storage tank for long life.

REFRIGERATION SYSTEM

Hermetically sealed, positive start compressor with lifetime lubrication, built-in overload protection, efficient capillary sizing, large capacity dryer-strainer, and self-lubricated fan cools copper/aluminum condenser. System uses R134a refrigerant. Protected by Halsey Taylor's Limited 5 Year Warranty.

VENTILATION

Insure proper ventilation by maintaining 6" (152mm) minimum clearance from cabinet venting to wall.

SUGGESTED SPECIFICATIONS

Self-contained, vandal-resistant pressure water cooler that shall deliver 8 gph of 50°F drinking water at 90°F ambient and 80°F inlet water. Unit shall be constructed of 14 gauge stainless steel with integral basin. Venting shall include protective screening. Front vandal-resistant push button activation with less than 5 lbs of force. Water-efficient, vandal-resistant bubbler shall be one-piece and operate on 20-105 psi supply line pressure. Shall include front access stream height adjustment. Cooling system shall include insulated stainless steel evaporator tank, R134a refrigerant and calibrated capillary tube for refrigerant control. Shall include adjustable, accessible thermostat. Shall comply with ANSI 117:1 and American with Disabilities Act for both children and adult frontal approach. The manufacturer shall certify the unit to meet the requirements of NSF/ANSI 61, Safe Drinking Water Act and be UL Listed.

NOTE: Continued product improvement makes specifications subject to change without notice. See Halsey Taylor website for most current spec sheet.

Vandal-Resistant Heavy-Duty 14-Gauge

Bi-Level Wall-Mounted Barrier-Free Cooler



Stainless Steel Finish Only

Optional Accessories (extra cost)

☐ Water Filter

JOB NAME: _____

ENGINEER/CONTRACTOR NAME: _____

APPROVAL: _____

DATE: _____

HVR8HD-BL ADA SERIES

Model No.	Base* Rate Cap.	F.L. Amps	Rated Watt Usage
HVR8HD-BL ADA	8.0	4.0	370

* With projector service and tap water at 80°F and 90° F ambient
Trap and service stop not included



halseytaylor.com

HALSEY TAYLOR, 2222 CAMDEN COURT, OAK BROOK, ILLINOIS 60523

HVR8HD-BL ADA

Vandal-Resistant Heavy Duty 14-Gauge Bi-Level Barrier-Free Cooler

(CONTINUED)

MOUNTING HEIGHT

Mounting height recommended 31 1/2" from basin to floor. May be mounted at any desired height. Check local codes.

MOUNTING INSTRUCTIONS

Mount trap and install service stop to supply line. Anchor hanger bracket securely to wall on all sides. Remove slip nut and gasket from trap and install on waste line tube. Hang cooler on bracket and engage waste line tube into trap

inlet. Centerline height of waste outlet will vary from floor line depending on mounting height. Install 3/8" supply tube to in-line strainer. Secure bottom of cooler to wall using holes provided.

Trap and service stop not included.

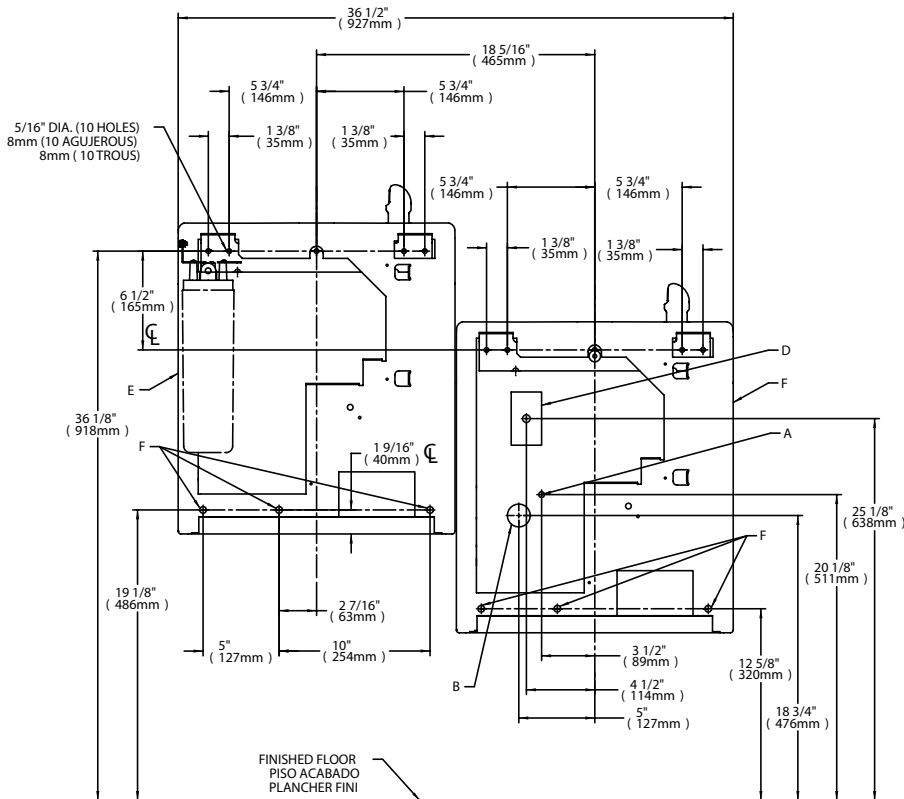
OPERATING PRESSURES:

Supply water - 105 psi maximum

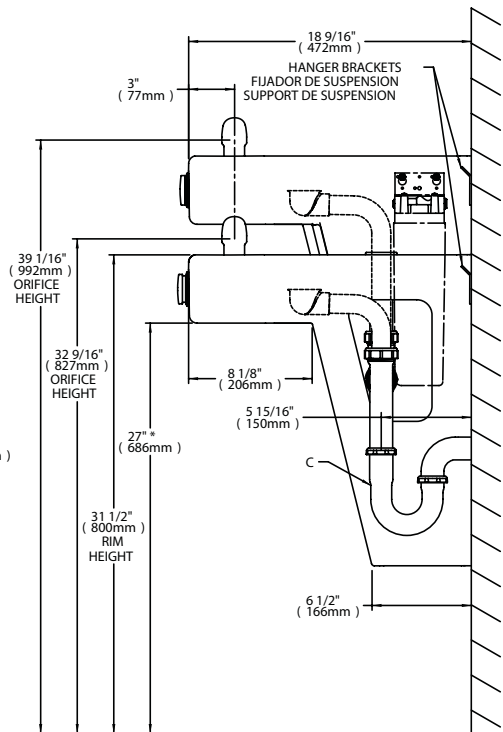
ELECTRICAL

115 Volt / 60 Hz units furnished with plug-in, 3 wire grounding type service cord. Standard 115 volt, 60 Hz, single phase. Install 115 volt receptacle rated at 15-amp minimum to receive 3-wire parallel blade grounding type male plug.

FRONT VIEW / WALL LAYOUT



SIDE VIEW



LEGEND:

A = RECOMMENDED WATER SUPPLY LOCATION. SHUT OFF VALVE (NOT FURNISHED) TO ACCEPT 3/8" O.D. UNPLATED COPPER TUBE.

B = RECOMMENDED LOCATION FOR WASTE OUTLET 1-1/2" O.D. DRAIN

C = 1-1/2" TRAP NOT FURNISHED

D = ELECTRICAL SUPPLY (3) WIRE RECESSED BOX

E = INSURE PROPER VENTILATION BY MAINTAINING 6" (152 mm) (MIN.) CLEARANCE FROM CABINET LOUVERS TO WALL.

F = 5/16 BOLT HOLES FOR FASTENING UNIT TO WALL

* Adult ADA requirement (shown) - 27" (686mm);

Child ADA requirement - 24" (608mm).

Adjust all other measurements accordingly.

Halsey Taylor®



Halsey Taylor®
Satisfying Thirsts Since 1912

MODEL: ☐ HVR8HD ADA



This water cooler is certified to
NSF/ANSI 61.

GENERAL

Self-contained, wall hung electric refrigerated water coolers with reliable vandal-resistant design. Constructed in 14 gauge heavy-duty stainless steel with a curved profile offering a safe and unobtrusive design. Ideal for applications prone to tampering, such as prisons and educational facilities. Includes the water-efficient, SmartFlow™ Bubbler.

When properly installed, unit meets state and federal requirements as defined by the Americans with Disabilities Act for both children or adults. Unit is certified to NSF/ANSI 61 and meets requirements of the Safe Drinking Water Act. Unit is UL Listed and provides 50°F water at 80°F inlet water and 90°F ambient.

COOLER CABINET / BASIN

Heavy-duty 14 gauge stainless steel cabinet with front access panel and integral basin. Durable satin finish resists stains and corrosion and is easy to maintain. Perforated venting with screens to prevent objects from being inserted into cooler.

COOLER TOP

Basin has embossed bubbler pad. Anti-splash ridge reduces splatter and contoured to insure proper drainage. Features heavy-duty, vandal-resistant drain.

VANDAL RESISTANT SMARTFLOW™ BUBBLER

Vandal-resistant, water-efficient bubbler is one-piece, chrome-plated. Unit has integral hood guard design to prevent contamination from other users, airborne deposits and tampering. Reduces the flow of water by nearly 40%▲ but maintains a steady, satisfying water stream. Keyed into position to prevent rotation.

PUSHBUTTON ACTUATION MECHANISM

Self-closing, vandal-resistant pushbutton does not require grasping or twisting. Allows front access stream height adjustment.

AUTOMATIC STREAM HEIGHT REGULATOR

Self-closing assembly is located inside unit to prevent tampering. Unit resists corrosion and liming. A constant stream height is automatically maintained under line pressures that vary from 20 to 105 psi.

▲ over average market performance

HVR8HD ADA SERIES

Model No.	Base* Rate Cap.	F.L. Amps	Rated Watt Usage
HVR8HD ADA	8.0	4.0	370

* With projector service and tap water at 80°F and 90° F ambient
Trap and service stop not included

INLET STRAINER

Easily cleaned in-line strainer screen traps articles of 140 microns or larger before entering the waterway.

TEMPERATURE CONTROL

Positive sensing thermostat for controlling temperature of storage tank water. Factory set at 50°F. Adjustable +/- 5°F.

STORAGE TANK

Stainless steel evaporator/storage tank for long life. Designed with a non-pressurized tank which is subject to line pressure only when push button is pressed.

REFRIGERATION SYSTEM

Hermetically sealed, positive start compressor with lifetime lubrication, built-in overload protection, efficient capillary sizing, large capacity dryer-strainer, and self-lubricated fan cools copper/aluminum condenser. System uses R134a refrigerant. Protected by Halsey Taylor's Limited 5 Year Warranty.

VENTILATION

Insure proper ventilation be maintaining 6" (152mm) minimum clearance from cabinet venting to wall.

SUGGESTED SPECIFICATIONS

Self-contained, vandal-resistant pressure water cooler that shall deliver 8 gph of 50°F drinking water at 90°F ambient and 80°F inlet water. Unit shall be constructed of 14 gauge stainless steel with integral basin. Venting shall include protective screening. Front vandal-resistant push button activation with less than 5 lbs of force. Water-efficient, vandal-resistant bubbler shall be one-piece and operate on 20-105 psi supply line pressure. Shall include front access stream height adjustment. Cooling system shall include insulated stainless steel evaporator tank, R134a refrigerant and calibrated capillary tube for refrigerant control. Shall include adjustable, accessible thermostat. Shall comply with ANSI 117:1 and American with Disabilities Act for both children and adult frontal approach. The manufacturer shall certify the unit to meet the requirements of NSF/ANSI 61, Safe Drinking Water Act and be UL Listed.

NOTE: Continued product improvement makes specifications subject to change without notice. See Halsey Taylor website for most current spec sheet.

Vandal-Resistant Heavy-Duty 14-Gauge

Wall-Mounted Barrier-Free Cooler



Stainless Steel Finish Only

Optional Accessories (extra cost)

☐ Water Filter

JOB NAME: _____

ENGINEER/CONTRACTOR NAME: _____

APPROVAL: _____

DATE: _____



halseytaylor.com

HALSEY TAYLOR, 2222 CAMDEN COURT, OAK BROOK, ILLINOIS 60523

HVR8HD ADA

Vandal-Resistant Heavy Duty 14-Gauge Barrier-Free Cooler

(CONTINUED)

MOUNTING HEIGHT

Mounting height recommended 31 1/2" from basin to floor. May be mounted at any desired height. Check local codes.

MOUNTING INSTRUCTIONS

Mount trap and install service stop to supply line. Anchor hanger bracket securely to wall on all sides. Remove slip nut and gasket from trap and install on waste line tube. Hang cooler on bracket and engage waste line tube into trap

inlet. Centerline height of waste outlet will vary from floor line depending on mounting height. Install 3/8" supply tube to in-line strainer. Secure bottom of cooler to wall using holes provided.

Trap and service stop not included.

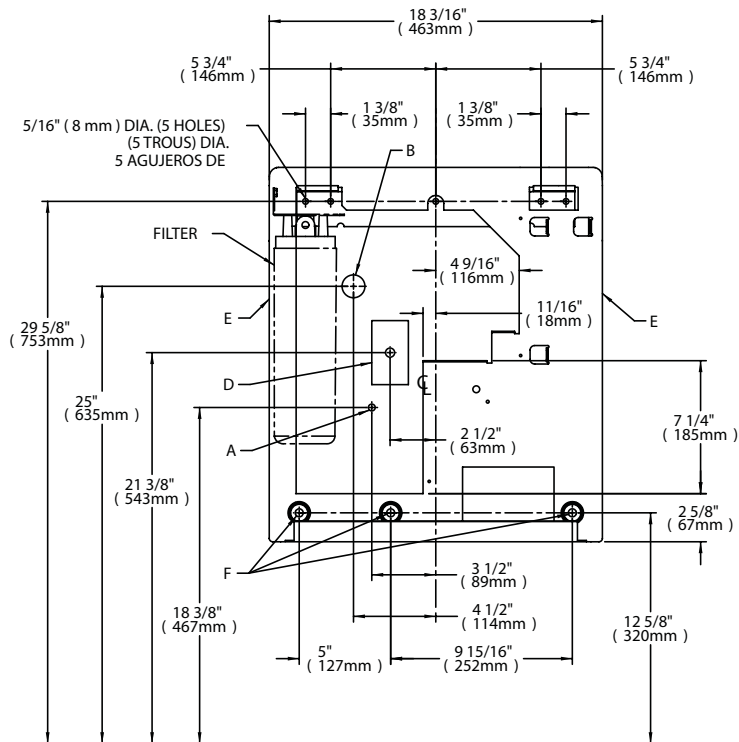
OPERATING PRESSURES:

Supply water - 105 psi maximum

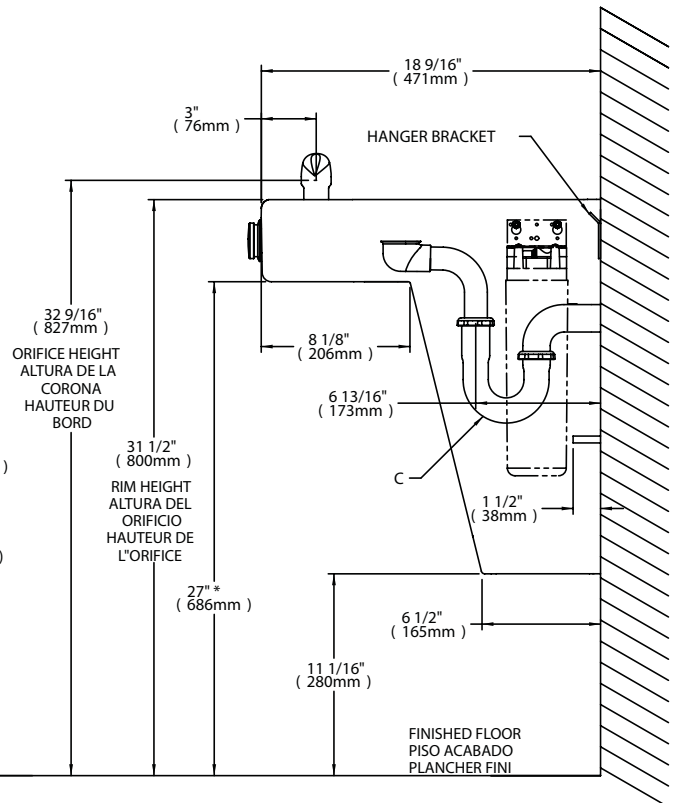
ELECTRICAL

115 Volt / 60 Hz units furnished with plug-in, 3 wire grounding type service cord. Standard 115 volt, 60 Hz, single phase. Install 115 volt receptacle rated at 15-amp minimum to receive 3-wire parallel blade grounding type male plug.

FRONT VIEW / WALL LAYOUT



SIDE VIEW



LEGEND:

A = RECOMMENDED WATER SUPPLY LOCATION. SHUT OFF VALVE (NOT FURNISHED) TO ACCEPT 3/8" O.D. UNPLATED COPPER TUBE.

B = RECOMMENDED LOCATION FOR WASTE OUTLET 1-1/4" O.D. DRAIN

C = 1-1/4" TRAP NOT FURNISHED

D = ELECTRICAL SUPPLY (3) WIRE RECESSED BOX

E = INSURE PROPER VENTILATION BY MAINTAINING 6" (152 mm) (MIN.) CLEARANCE FROM CABINET LOUVERS TO WALL.

F = 5/16 BOLT HOLES FOR FASTENING UNIT TO WALL

* Adult ADA requirement (shown) - 27" (686mm);

Child ADA requirement - 24" (608mm).

Adjust all other measurements accordingly.



Halsey Taylor®
Satisfying Thirsts Since 1912

Bi-Level Vandal-Resistant Indoor/Outdoor

MODEL: ☐ HVR8BL ADA
☐ HVRBL-L/R ADA



This water cooler is certified to
NSF/ANSI 61.

GENERAL

Self-contained, electric refrigerated, bi-level wall-mounted water cooler designed to be easily accessible to physically challenged individuals. When properly installed, unit on right side meets state and federal requirements **for both children or adults** as defined by the Americans with Disabilities Act. Unit is certified to NSF/ANSI 61, and meets requirements of the Safe Drinking Water Act. Unit provides 50° F water at 80° F inlet water and 90° F ambient. **Unit is UL listed for indoor and outdoor service.**

CABINET

Stainless steel panels resist wear and corrosion. Durable satin finish helps hide water spots and fingerprints.

COOLER TOP

Non-corrosive stainless steel cooler top, number 300 series with satin finish resists stains and corrosion and is easy to maintain. Anti-splash ridge reduces splatter. Contoured to insure proper drainage.

BUBBLER

Vandal-resistant bubbler is one-piece, chrome-plated, with integral hood guard design to prevent contamination from other users, airborne deposits and tampering.

PUSHBUTTON ACTUATION MECHANISM

Self-closing, vandal-resistant pushbutton does not require grasping or twisting.

AUTOMATIC STREAM HEIGHT REGULATOR

Self-closing assembly is located inside unit to prevent tampering. Unit resists corrosion and lining. A constant stream height is automatically maintained under line pressures that vary from 20 to 105 psi.

INLET STRAINER

Easily cleaned in-line strainer screen traps particles of 140 microns or larger before they enter the waterway.

TEMPERATURE CONTROL

Positive sensing thermostat for controlling temperature of storage tank water. Factory set at 50° F Adjustable $\pm 5^\circ$ F.

STORAGE TANK

Stainless steel evaporator/storage tank for long life. Waterways are certified to NSF/ANSI 61, far exceeding the requirements of the Safe Drinking Water Act.

REFRIGERATION SYSTEM

Hermetically sealed, positive start compressor with lifetime lubrication and built-in overload protection, efficient capillary sizing, large capacity dryer-strainer, and self-lubricated fan cools copper/aluminum condenser. System uses R134A refrigerant. Protected by Halsey Taylor's Limited 5 Year Warranty.

VENTILATION

Insure proper ventilation by maintaining 6" (152mm) minimum clearance from cabinet louvers to wall.

SUGGESTED SPECIFICATIONS

Shall deliver 7.8 GPH of 50° F water at 90° F ambient and 80° F inlet water. Shall have stainless steel basin with removable drain strainer. Bubbler shall be one-piece, vandal-resistant type. Separate valve and automatic stream regulator shall be mounted within cabinet. Refrigeration system shall employ high efficiency, positive start compressor using R134A, stainless steel tank with totally encapsulated insulation and be controlled by positive sensing thermostat. Cooler shall comply with ANSI 117:1 and ADA for visual and motion disabilities. The manufacturer shall certify the unit to meet the requirements of NSF/ANSI 61, and the Safe Drinking Water Act. Unit complies with ARI Standard 1010.

NOTE: Continued product improvement makes specifications subject to change without notice. See Halsey Taylor website for most current spec sheet.

Barrier-Free Cooler



Stainless Steel Finish Only

Optional Accessories (extra cost)

- ☐ Water Filter**
- ☐ Cane Touch Apron
- ☐ Frost-Resistant Model
(Factory Installed Only - HVR8BLFR ADA)
- ☐ 220-240V 50Hz
- ☐ 220-240V 60Hz
- ☐ Louver Screens

** Water filter option not available for frost-resistant models

JOB NAME: _____

ENGINEER/CONTRACTOR NAME: _____

APPROVAL: _____

DATE: _____

HVR BARRIER-FREE SERIES

Model No.	GPH Capacity Cooled to 50° F*				Base Rate Cap.	F.L. Amps	Shipping Weight lb.	Rated Watt Usage
	Ambient Air Temp							
	70°F	80°F	90°F†	100°F				
HVR8BL ADA	9.4	8.6	7.8	7.0	7.8	4.0	94	370
HVR8BLFR ADA	9.4	8.6	7.8	7.0	7.8	6.2	96	620
HVR8BL ADA 220-240V 50 Hz	7.9	7.2	6.5	5.9	6.5	2.0	94	370
HVR8BL ADA 220-240V 60 Hz	9.4	8.6	7.8	7.0	7.8	2.0	94	370

* With projector service and tap water at 80° F

† UL listed and complies with ARI Standard 1010

Trap and service stop not included

halseytaylor.com

HALSEY TAYLOR, 2222 CAMDEN COURT, OAK BROOK, ILLINOIS 60523



HVR8BL-CHILD ADA, HVRBL-L/R-CHILD ADA

Bi-Level Vandal-Resistant Indoor/Outdoor Barrier-Free Cooler

(CONTINUED)

MOUNTING HEIGHT

Mounting height recommended 31 ¹³/₁₆" from basin to floor. May be mounted at any desired height. Check local codes.

MOUNTING INSTRUCTIONS

Mount trap and install service stop to building supply line. Anchor hanger bracket securely to wall on all sides. To insure proper engaging of waste line into trap, centerline of trap must be 4 ¹/₈" from wall face. Remove slip nut and gasket from trap and install on waste line tube. Hang cooler on bracket and engage waste line tube into trap inlet. Centerline height of waste outlet will vary from floor line depending on mounting height. Install ³/₈" supply tube to in-line strainer. Secure bottom of cooler to wall using holes provided.

Trap and service stop not included.

OPERATING PRESSURES:

Supply water - 105 psi maximum. Minimum 40 psi supply line pressure required in special circumstances when both sides of bi-level are in use simultaneously to ensure adequate stream height. Does not apply to non-refrigerated units. For water filtered bi-level units it is preferable to install two single filtered units to obtain adequate stream height regardless of pressure.

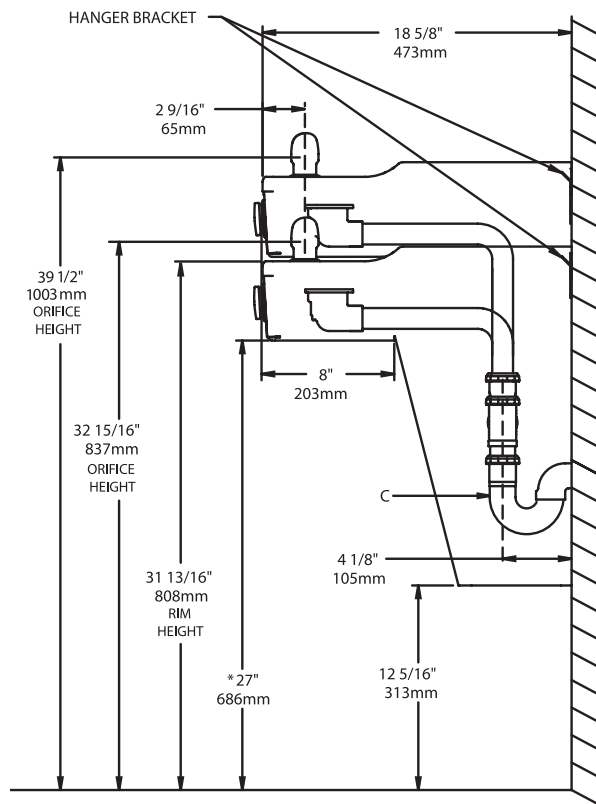
ELECTRICAL

120 Volt / 60 Hz units furnished with plug-in, 3 wire grounding type service cord. Standard 120 volt, 60 Hz, single phase. Install 120 volt receptacle rated at 15-amp minimum to receive 3-wire parallel blade grounding type male plug. 220-240 Volt units furnished with universal plug receptacle.

LEGEND:

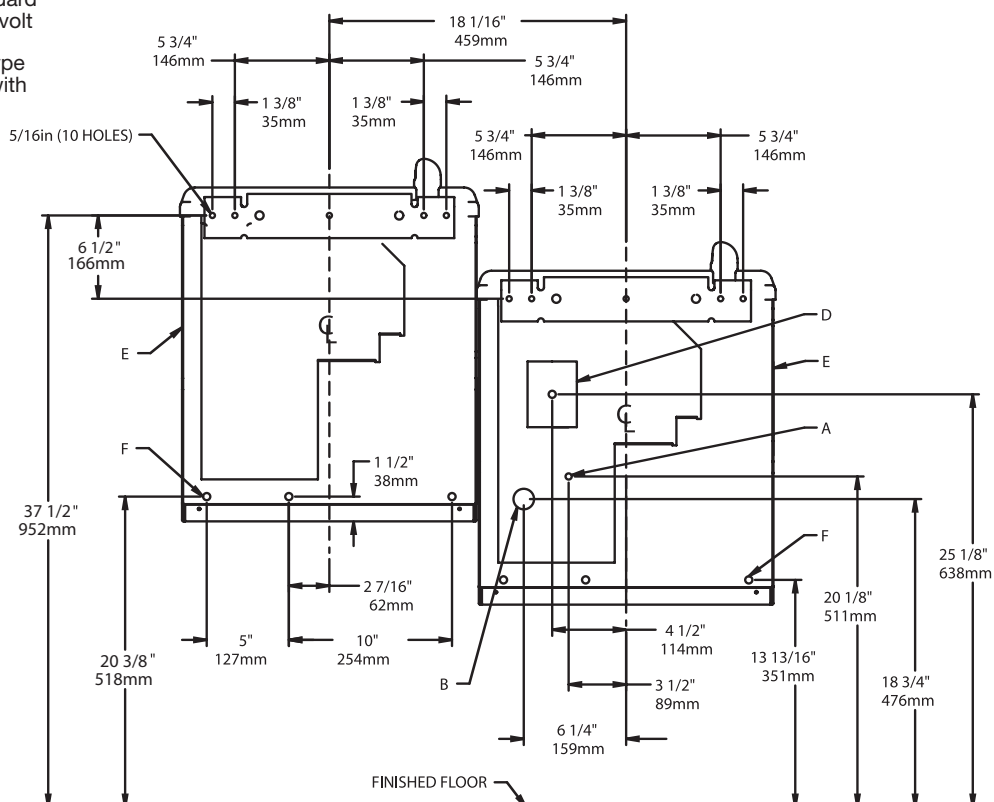
- A = RECOMMENDED WATER SUPPLY LOCATION. SHUT OFF VALVE (NOT FURNISHED) TO ACCEPT 3/8" O.D. UNPLATED COPPER TUBE.
- B = RECOMMENDED LOCATION FOR WASTE OUTLET 1-1/4" O.D. DRAIN
- C = 1-1/2" TRAP NOT FURNISHED
- D = ELECTRICAL SUPPLY (3) WIRE RECESSED BOX
- E = INSURE PROPER VENTILATION BY MAINTAINING 6" (152 mm) (MIN.) CLEARANCE FROM CABINET LOUVERS TO WALL.
- F = 5/16 BOLT HOLES FOR FASTENING UNIT TO WALL

SIDE VIEW



NOTE: A service supply stop must be installed at the cooler inlet tube.
* Adult ADA requirement. 24" (608mm) for child ADA.
Adjust other measurements accordingly.

FRONT VIEW / WALL LAYOUT



Halsey Taylor®



Halsey Taylor®
Satisfying Thirsts Since 1912

Vandal-Resistant Indoor/Outdoor

Wall-Mounted Barrier-Free Cooler



Stainless Steel Finish Only

Optional Accessories (extra cost)

- ☐ Water Filter**
- ☐ Frost-Resistant Model
(factory installed only - HVR8FR-CHILD ADA)
- ☐ 220-240V 50 Hz
- ☐ 220-240V 60 Hz
- ☐ Louver Screens

** Water filter option not available for frost-resistant models

JOB NAME: _____

ENGINEER/CONTRACTOR NAME: _____

APPROVAL: _____

DATE: _____

MODEL: ☐ HVR8 ADA
☐ HVR-L/R ADA



This water cooler is certified to
NSF/ANSI 61.

GENERAL

Self-contained, electric refrigerated wall-mounted water cooler designed to be easily accessible to physically challenged individuals. When properly installed, unit meets state and federal requirements as defined by the Americans with Disabilities Act **for both children or adults.** Unit is certified to NSF/ANSI 61, and meets requirements of the Safe Drinking Water Act. Unit provides 50° F water at 80° F inlet water and 90° F ambient. **Unit is UL listed for indoor and outdoor service.**

CABINET

Stainless steel panels resists wear and corrosion. Durable satin finish helps hide water spots and fingerprints.

COOLER TOP

Non-corrosive stainless steel cooler top, number 300 series with satin finish resists stains and corrosion and is easy to maintain. Anti-splash ridge reduces splatter. Contoured to insure proper drainage.

BUBBLER

Vandal-resistant bubbler is one-piece, chrome-plated. Unit has integral hood guard design to prevent contamination from other users, airborne deposits and tampering.

PUSHBUTTON ACTUATION MECHANISM

Self-closing, vandal-resistant pushbutton does not require grasping or twisting.

AUTOMATIC STREAM HEIGHT REGULATOR

Self-closing assembly is located inside unit to prevent tampering. Unit resists corrosion and liming. A constant stream height is automatically maintained under line pressures that vary from 20 to 105 psi.

INLET STRAINER

Easily cleaned in-line strainer screen traps particles of 140 microns or larger before they enter the waterway.

TEMPERATURE CONTROL

Positive sensing thermostat for controlling temperature of storage tank water. Factory set at 50° F Adjustable $\pm 5^\circ$ F.

STORAGE TANK

Non-pressurized stainless steel evaporator/storage tank for long life. Waterways are certified to NSF/ANSI 61, far exceeding the requirements of the Safe Drinking Water Act.

REFRIGERATION SYSTEM

Hermetically sealed, positive start compressor with lifetime lubrication and built-in overload protection, efficient capillary sizing, large capacity dryer-strainer, and self-lubricated fan cools copper/aluminum condenser. System uses R134A refrigerant. Protected by Halsey Taylor's Limited 5 Year Warranty.

VENTILATION

Insure proper ventilation by maintaining 6" (152mm) minimum clearance from cabinet louvers to wall.

SUGGESTED SPECIFICATIONS

Shall deliver 7.8 GPH of 50° F water at 90° F ambient and 80° F inlet water. Shall have stainless steel basin with removable drain strainer. Bubbler shall be one-piece, vandal-resistant. Separate valve and automatic stream regulator shall be mounted within cabinet. Refrigeration system shall employ high efficiency, positive start compressor using R134A, non-pressurized tank with totally encapsulated insulation and be controlled by positive sensing thermostat. Unit shall comply with ANSI 117:1 and ADA for visual and motion disabilities. Unit shall be UL listed for outdoor service. The manufacturer shall certify the unit to meet the requirements of NSF/ANSI 61, and the Safe Drinking Water Act. Unit complies with ARI Standard 1010.

NOTE: Continued product improvement makes specifications subject to change without notice. See Halsey Taylor website for most current spec sheet.

HRV BARRIER-FREE SERIES

Model No.	GPH Capacity Cooled to 50° F*				Base Rate Cap.	F.L. Amps	Shipping Weight lb.	Rated Watt Usage
	Ambient Air Temp							
	70°F	80°F	90°F†	100°F				
HVR8 ADA	9.4	8.6	7.8	7.0	7.8	4.0	66	370
HVR8FR ADA	9.4	8.6	7.8	7.0	7.8	6.2	68	620
HVR8 ADA 220-240V 50 Hz	7.9	7.2	6.5	5.9	6.5	2.0	66	370
HVR8 ADA 220-240V 60 Hz	9.4	8.6	7.8	7.0	7.8	2.0	66	370

* With projector service and tap water at 80° F

† UL listed and complies with ARI Standard 1010

Trap and service stop not included



halseytaylor.com

HALSEY TAYLOR, 2222 CAMDEN COURT, OAK BROOK, ILLINOIS 60523

HVR8 ADA, HVR-L/R ADA

Vandal-Resistant Indoor/Outdoor Barrier-Free Cooler

(CONTINUED)

MOUNTING HEIGHT

Mounting height recommended 31^{13/16"} from basin to floor. May be mounted at any desired height. Check local codes.

MOUNTING INSTRUCTIONS

Mount trap and install service stop to supply line. Anchor hanger bracket securely to wall on all sides. To insure proper engaging of waste line into trap, centerline of trap must be 6^{1/4"} from

wall face. Remove slip nut and gasket from trap and install on waste line tube. Hang cooler on bracket and engage waste line tube into trap inlet. Centerline height of waste outlet will vary from floor line depending on mounting height. Install ³/_{8"} supply tube to in-line strainer. Secure bottom of cooler to wall using holes provided.

Trap and service stop not included.

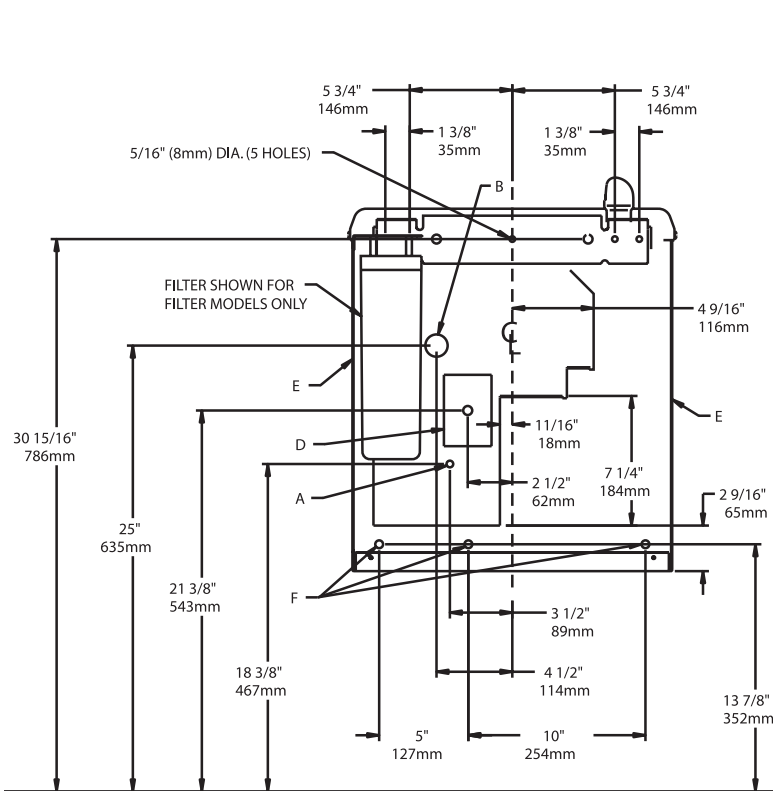
OPERATING PRESSURES:

Supply water - 105 psi maximum

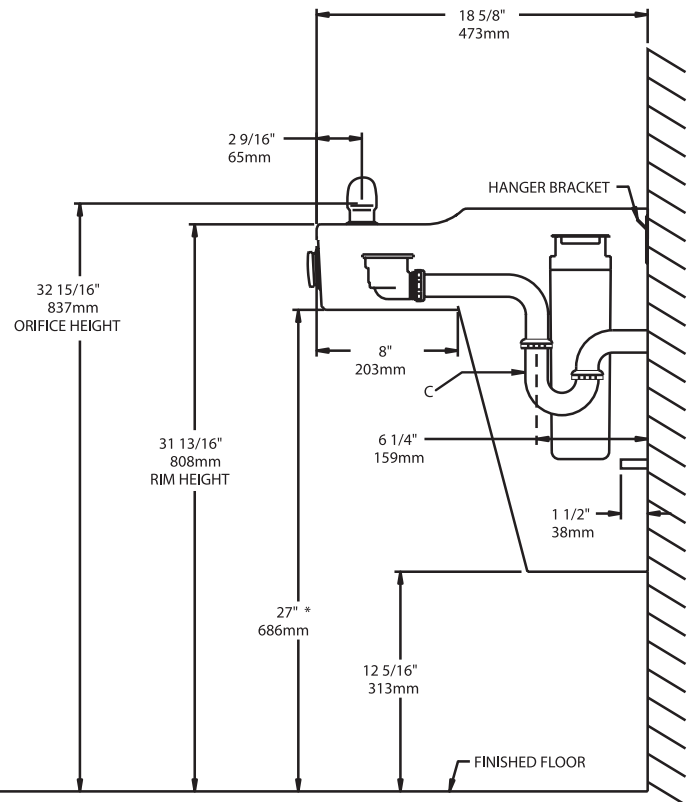
ELECTRICAL

120 Volt / 60 Hz units furnished with plug-in, 3 wire grounding type service cord. Standard 120 volt, 60 Hz, single phase. Install 120 volt receptacle rated at 15-amp minimum to receive 3-wire parallel blade grounding type male plug. 220 Volt units furnished with universal plug receptacle.

FRONT VIEW / WALL LAYOUT



SIDE VIEW



LEGEND:

A = RECOMMENDED WATER SUPPLY LOCATION. SHUT OFF VALVE (NOT FURNISHED) TO ACCEPT ³/_{8"} O.D. UNPLATED COPPER TUBE.

B = RECOMMENDED LOCATION FOR WASTE OUTLET 1-1/4" O.D. DRAIN

C = 1-1/4" TRAP NOT FURNISHED

D = ELECTRICAL SUPPLY (3) WIRE RECESSED BOX

E = INSURE PROPER VENTILATION BY MAINTAINING 6" (152 mm) (MIN.) CLEARANCE FROM CABINET LOUVERS TO WALL.

F = 5/16 BOLT HOLES FOR FASTENING UNIT TO WALL

* Adult ADA requirement. 24" (608mm) for child ADA. Adjust other measurements accordingly.

Halsey Taylor®

Printed in the U.S.A.